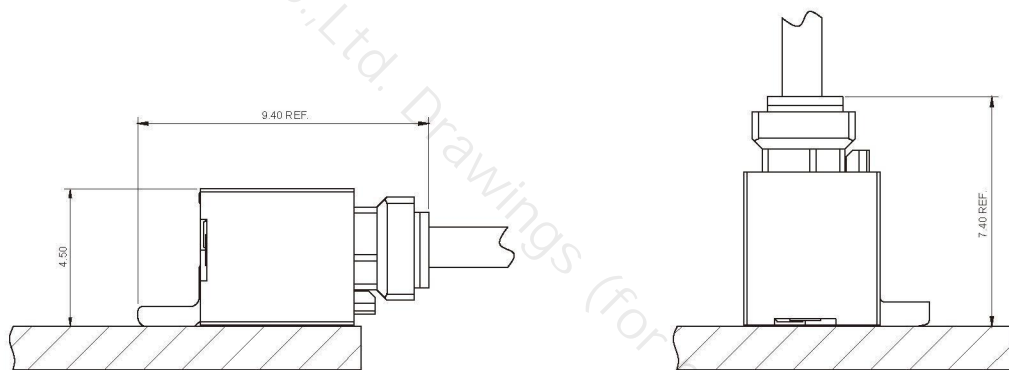


■ **Specifications**

- Contact resistance: $\leq 20m\Omega$
- Insulation resistance: $\geq 1000M\Omega$
- Rated voltage: 350V AC DC
- Rated current: 3.0A AC DC
- Withstand voltage: 500V AC/minute
- Temperature range: $-40^{\circ}C \sim +105^{\circ}C$

■ **Assembly Layout**

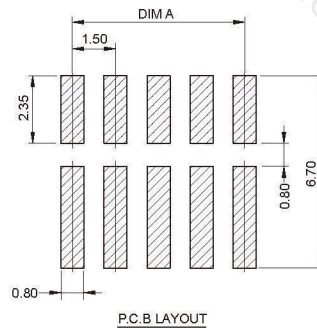
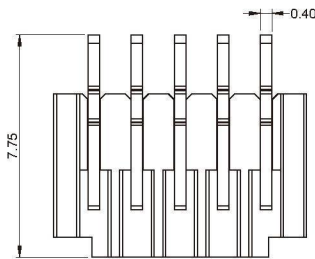
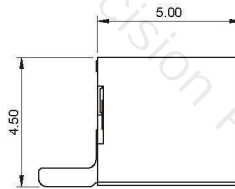
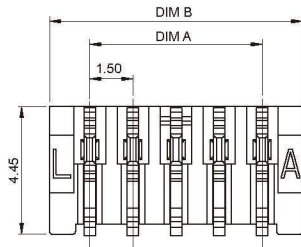
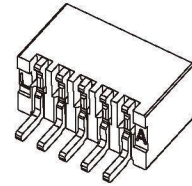


| |
|-----------------|
| WIRE TO BOARD |
| BOARD TO BOARD |
| WIRE TO WIRE |
| FPC SERIES |
| THR SERIES |
| LIGHTING SERIES |
| OTHER SERIES |

A1504 SERIES 1.50mm pitch wire to board connector

A1504AWR (1.50mm pitch 90°Wafer SMT TYPE)

- Reference Information:
- Material: Pin: Phosphor Bronze/Tin-plated
- Wafer: LCP,UL94V-0
- Mates with A1504 series Housing

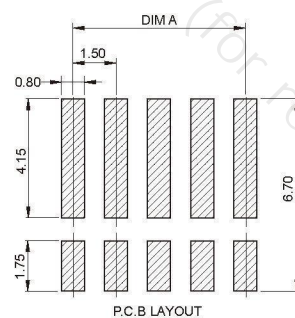
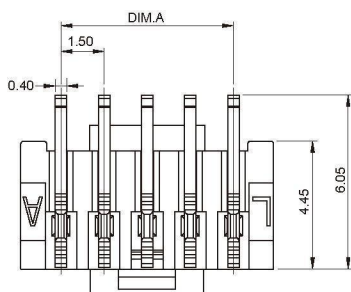
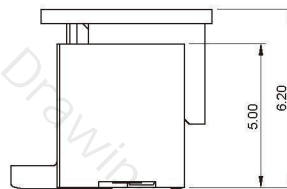
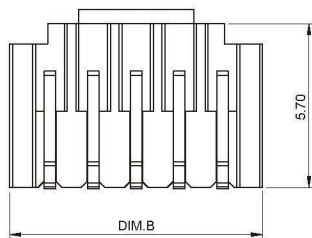
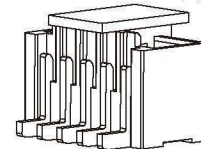


Ordering Information & Dimensions:

| Circuit | Dimensions(mm) | |
|---------|----------------|-------|
| | A | B |
| 02 | 1.50 | 4.30 |
| 03 | 3.00 | 5.80 |
| 04 | 4.50 | 7.30 |
| 05 | 6.00 | 8.80 |
| 06 | 7.50 | 10.30 |
| 07 | 9.00 | 11.80 |
| 08 | 10.50 | 13.30 |
| 09 | 12.00 | 14.80 |
| 10 | 13.50 | 16.30 |
| 11 | 15.00 | 17.80 |
| 12 | 16.50 | 19.30 |
| 13 | 18.00 | 20.80 |
| 14 | 19.50 | 22.30 |
| 15 | 21.00 | 23.80 |

A1504AWV (1.50mm pitch 180°Wafer SMT TYPE)

- Reference Information:
- Material: Pin: Phosphor Bronze/Tin-plated
- Wafer: LCP,UL94V-0
- Mates with A1504 series Housing



Ordering Information & Dimensions:

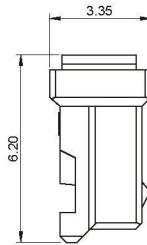
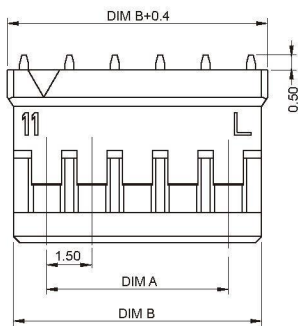
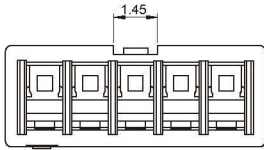
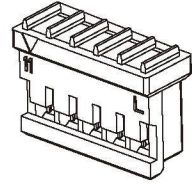
| Circuit | Dimensions(mm) | |
|---------|----------------|-------|
| | A | B |
| 02 | 1.50 | 4.30 |
| 03 | 3.00 | 5.80 |
| 04 | 4.50 | 7.30 |
| 05 | 6.00 | 8.80 |
| 06 | 7.50 | 10.30 |
| 07 | 9.00 | 11.80 |
| 08 | 10.50 | 13.30 |
| 09 | 12.00 | 14.80 |
| 10 | 13.50 | 16.30 |
| 11 | 15.00 | 17.80 |
| 12 | 16.50 | 19.30 |
| 13 | 18.00 | 20.80 |
| 14 | 19.50 | 22.30 |
| 15 | 21.00 | 23.80 |

A1504 SERIES

1.50mm pitch wire to board connector

A1504Y (1.50mm pitch Housing)

- Reference Information:
- Material: PA66, UL94V-0(2)
- Mates with A1504 series Wafer

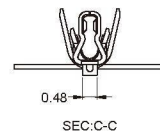
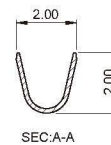
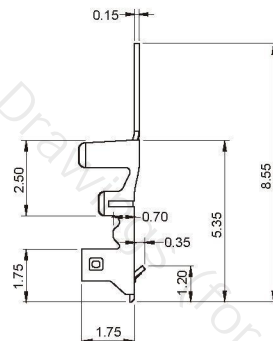
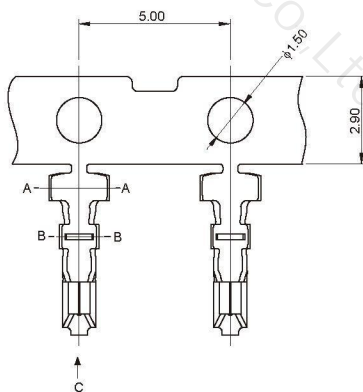


Ordering Information & Dimensions:

| Circuit | Dimensions(mm) | |
|---------|----------------|-------|
| | A | B |
| 02 | 1.50 | 3.70 |
| 03 | 3.00 | 5.20 |
| 04 | 4.50 | 6.70 |
| 05 | 6.00 | 8.20 |
| 06 | 7.50 | 9.70 |
| 07 | 9.00 | 11.20 |
| 08 | 10.50 | 12.70 |
| 09 | 12.00 | 14.20 |
| 10 | 13.50 | 15.70 |
| 11 | 15.00 | 17.20 |
| 12 | 16.50 | 18.70 |
| 13 | 18.00 | 20.20 |
| 14 | 19.50 | 21.70 |
| 15 | 21.00 | 23.20 |

A1504T (1.50mm pitch Terminal)

- Reference Information:
- Used in A1504 series Housing



Ordering Information & Dimensions:

| Part No | Wire Range | Insulation O.D. | Material | Finish | Qty/Reel |
|---------|-------------|-----------------|-----------------|------------|----------|
| A1504T | AWG #24~#28 | 0.70~1.10mm | Phosphor bronze | Tin-plated | 15000PCS |

WIRE TO BOARD

BOARD TO BOARD

WIRE TO WIRE

FPC SERIES

THRU SERIES

LIGHTING SERIES

OTHER SERIES