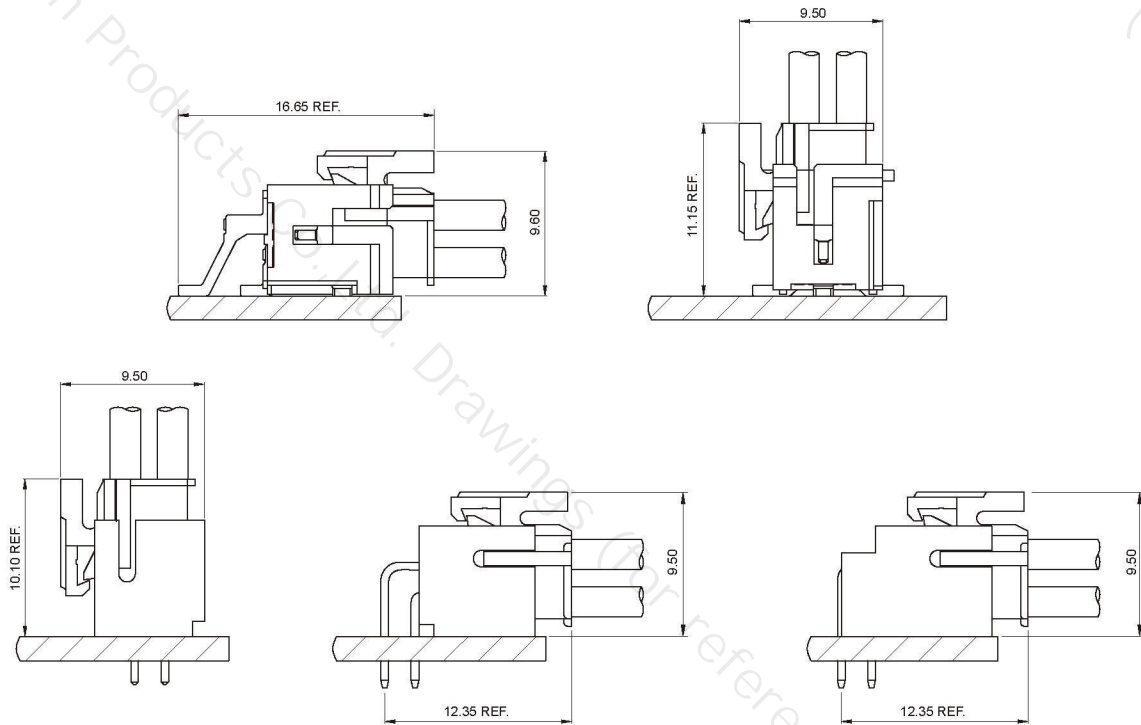


Specifications

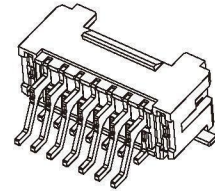
- Contact resistance: $\leq 30m\Omega$
- Insulation resistance: $\geq 1000M\Omega$
- Rated voltage: 250V AC DC
- Rated current: 3.0A AC DC
- Withstand voltage: 1000V AC/minute
- Temperature range: $-25^{\circ}C \sim +85^{\circ}C$

Assembly Layout

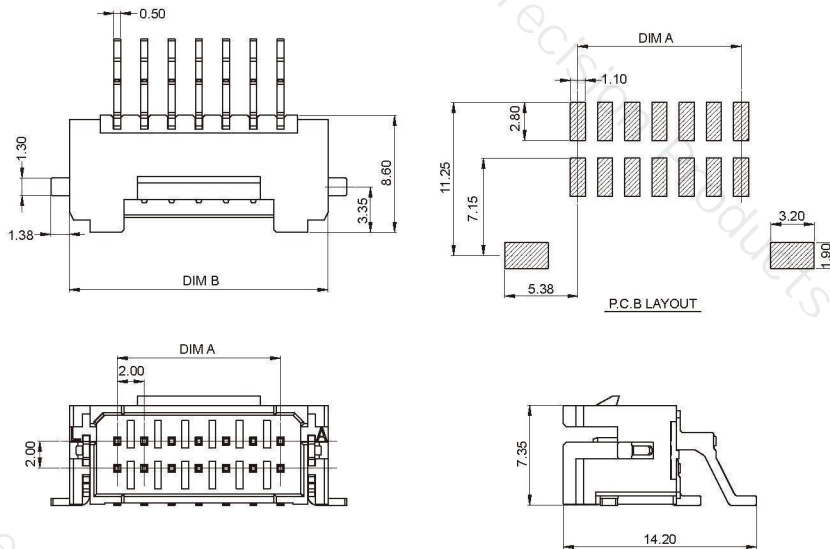


A2004AWR (2.00mm pitch 90°Wafer SMT TYPE)

- Reference Information:
- Material: Pin: Brass/Tin-plated
- Solder Tabs: Brass/Tin-plated
- Wafer: LCP,UL94V-0
- Mates with A2004 series Housing



Patent No.: ZL.201930635632.9

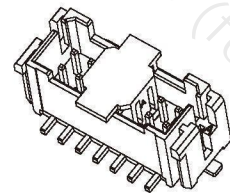


Ordering Information & Dimensions:

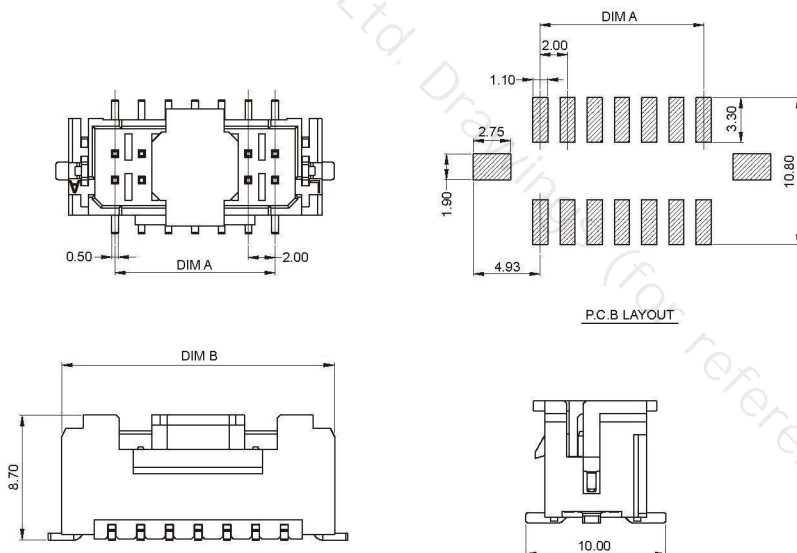
Circuit	Dimensions(mm)	
	A	B
2*2	2.00	9.00
2*3	4.00	11.00
2*4	6.00	13.00
2*5	8.00	15.00
2*6	10.00	17.00
2*7	12.00	19.00
2*8	14.00	21.00
2*9	16.00	23.00
2*10	18.00	25.00
2*11	20.00	27.00
2*12	22.00	29.00
2*13	24.00	31.00
2*14	26.00	33.00
2*15	28.00	35.00
2*16	30.00	37.00

A2004AWV (2.00mm pitch 180°Wafer SMT TYPE)

- Reference Information:
- Material: Pin: Brass/Tin-plated
- Solder Tabs: Brass/Tin-plated
- Wafer: LCP,UL94V-0
- Mates with A2004 series Housing



Patent No.: ZL.202030187558.1

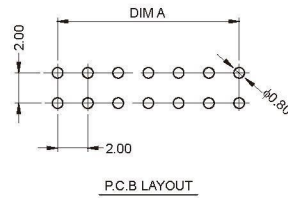
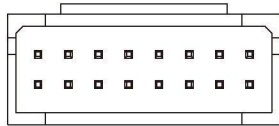
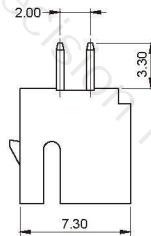
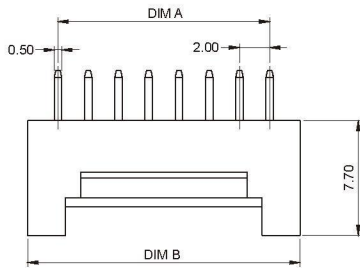
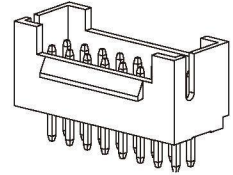


Ordering Information & Dimensions:

Circuit	Dimensions(mm)	
	A	B
2*2	2.00	9.00
2*3	4.00	11.00
2*4	6.00	13.00
2*5	8.00	15.00
2*6	10.00	17.00
2*7	12.00	19.00
2*8	14.00	21.00
2*9	16.00	23.00
2*10	18.00	25.00
2*11	20.00	27.00
2*12	22.00	29.00
2*13	24.00	31.00
2*14	26.00	33.00
2*15	28.00	35.00
2*16	30.00	37.00

A2004A (2.00mm pitch 180°Wafer DIP TYPE)

- Reference Information:
- Material: Pin: Brass/Tin-plated
- Wafer: PA66,UL94V-0(2)
- Mates with A2004 series Housing

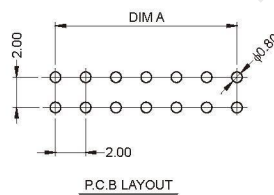
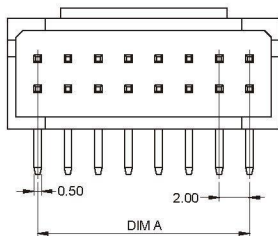
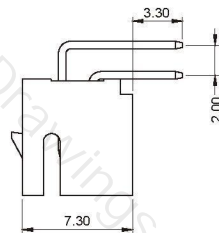
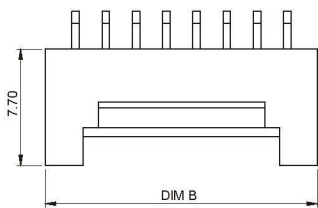
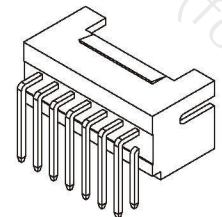


Ordering Information & Dimensions:

Circuit	Dimensions(mm)	
	A	B
2*2	2.00	6.00
2*3	4.00	8.00
2*4	6.00	10.00
2*5	8.00	12.00
2*6	10.00	14.00
2*7	12.00	16.00
2*8	14.00	18.00
2*9	16.00	20.00
2*10	18.00	22.00
2*11	20.00	24.00
2*12	22.00	26.00
2*13	24.00	28.00
2*14	26.00	30.00
...
2*30	58.00	62.00

A2004AW (2.00mm pitch 90°Wafer DIP TYPE)

- Reference Information:
- Material: Pin: Brass/Tin-plated
- Wafer: PA66,UL94V-0(2)
- Mates with A2004 series Housing



Ordering Information & Dimensions:

Circuit	Dimensions(mm)	
	A	B
2*2	2.00	6.00
2*3	4.00	8.00
2*4	6.00	10.00
2*5	8.00	12.00
2*6	10.00	14.00
2*7	12.00	16.00
2*8	14.00	18.00
2*9	16.00	20.00
2*10	18.00	22.00
2*11	20.00	24.00
2*12	22.00	26.00
2*13	24.00	28.00
2*14	26.00	30.00
...
2*30	58.00	62.00

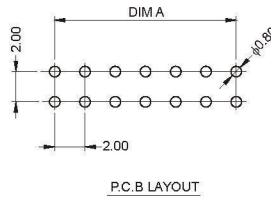
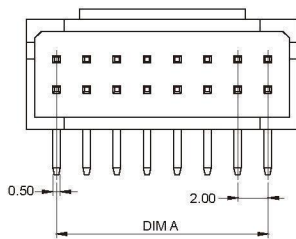
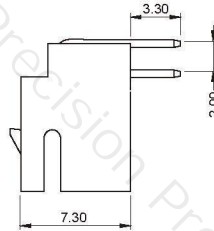
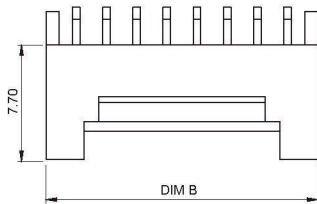
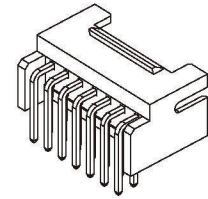
A2004 SERIES

2.00mm pitch wire to board connector

A2004AWD (2.00mm pitch 90°Wafer DIP TYPE)

■ Reference Information:

Material: Pin: Brass/Tin-plated
 Wafer: PA66,UL94V-0(2)
 Mates with A2004 series Housing



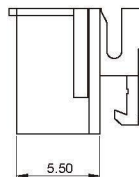
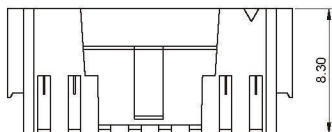
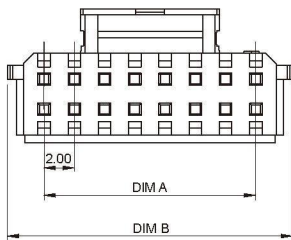
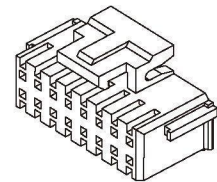
Ordering Information & Dimensions:

Circuit	Dimensions(mm)	
	A	B
2*2	2.00	6.00
2*3	4.00	8.00
2*4	6.00	10.00
2*5	8.00	12.00
2*6	10.00	14.00
2*7	12.00	16.00
2*8	14.00	18.00
2*9	16.00	20.00
2*10	18.00	22.00
2*11	20.00	24.00
2*12	22.00	26.00
2*13	24.00	28.00
2*14	26.00	30.00
2*15	28.00	32.00

A2004Y (2.00mm pitch Housing)

■ Reference Information:

Material: PA66,UL94V-0(2)
 Suitable A2004 series terminal
 Mates with A2004 series Wafer



Ordering Information & Dimensions:

Circuit	Dimensions(mm)	
	A	B
2*2	2.00	6.00
2*3	4.00	8.00
2*4	6.00	10.00
2*5	8.00	12.00
2*6	10.00	14.00
2*7	12.00	16.00
2*8	14.00	18.00
2*9	16.00	20.00
2*10	18.00	22.00
2*11	20.00	24.00
2*12	22.00	26.00
2*13	24.00	28.00
...
2*30	58.00	62.00

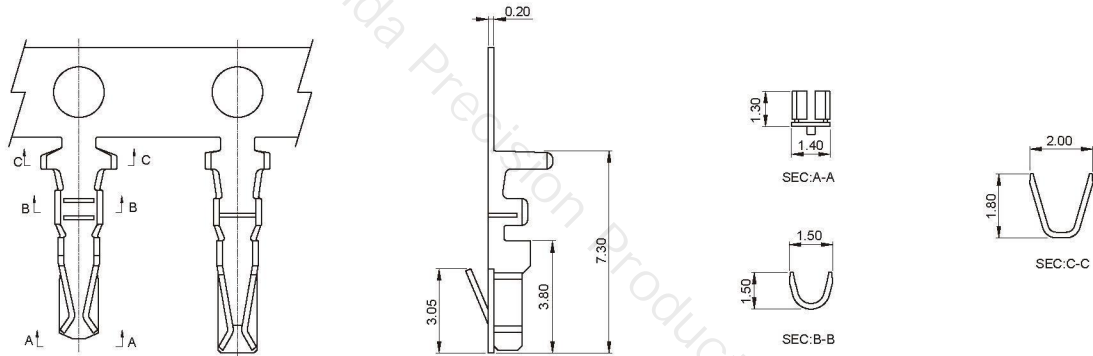
A2004 SERIES

2.00mm pitch wire to board connector

A2004T (2.00mm pitch Terminal)

■ Reference Information:

Used in A2004 series Housing



Ordering Information & Dimensions:

Part No	Wire Range	Insulation O.D.	Material	Finish	Qty/Reel
A2004T	AWG #22 ~ #28	1.60mm(max)	Phosphor bronze	Tin-plated	12000PCS

WIRE TO BOARD

BOARD TO BOARD

WIRE TO WIRE

FPC SERIES

THR SERIES

LIGHTING SERIES

OTHER SERIES