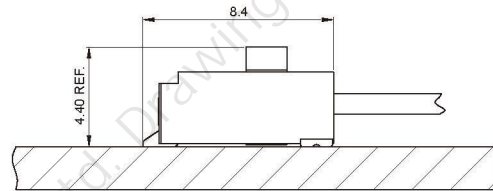


■ **Specifications**

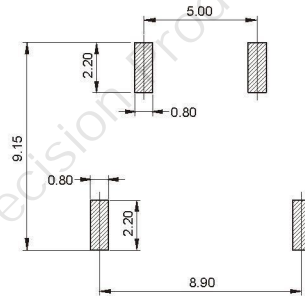
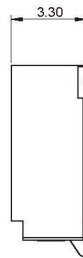
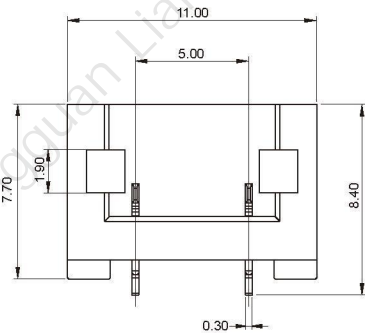
- Contact resistance: $\leq 20m\Omega$
- Insulation resistance: $\geq 1000M\Omega$
- Rated voltage: 250V AC DC
- Rated current: 2.0A AC DC
- Withstand voltage: 2000V AC/minute
- Temperature range: $-25^{\circ}C \sim +85^{\circ}C$

■ **Assembly Layout**

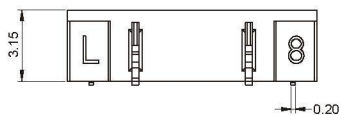


A5001AWR (5.00mm pitch 90°Wafer SMT TYPE)

- Reference Informations:
- Material: Pin: Brass/Tin-plated
 - Solder Tabs: Phosphor Bronze/Tin-plated
 - Wafer: LCP,UL94V-0
 - Mates with A5001 series Housing



P.C.B LAYOUT



A5001 SERIES

5.00mm pitch wire to board connector

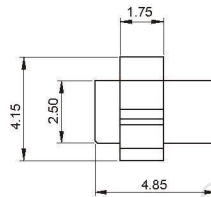
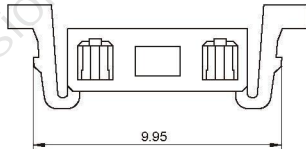
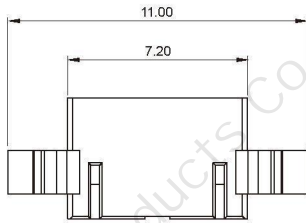
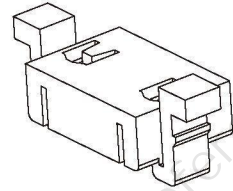
A5001Y (5.0mm pitch Housing)

■ Reference Information:

Material: PA66, UL 94V-0(2)

Suitable A5001 series terminal

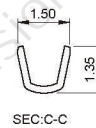
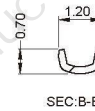
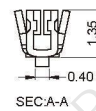
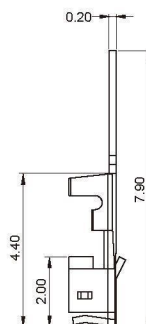
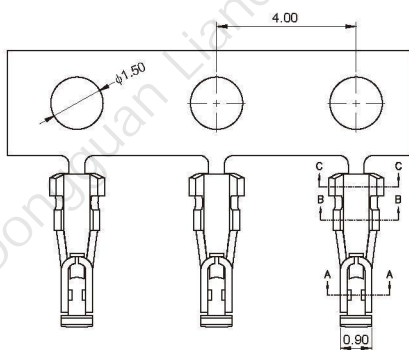
Mates with A5001 series Wafer



A5001T (5.00mm pitch Terminal)

■ Reference Information:

Used in A5001 series Housing



Ordering Information & Dimensions:

Part No	Wire Range	Insulation O.D.	Material	Finish	Qty/Reel
A5001T	AWG #26 ~ #30	1.20mm(max)	Phosphor bronze	Tin-plated	/