

Recommended PC board pattern
(TOP VIEW)

POWER PINS	A			
	16 SIGNAL PINS	24 SIGNAL PINS	40 SIGNAL PINS	80 SIGNAL PINS
1	27.44	31.45	39.44	59.44
2	37.44	41.45	49.44	69.44

NOTES:

MATERIAL:

- HOUSING:THERMO-PLASTIC. UL 94V-0 NATURE
- CONTACT:PHOSPHOR BRONZE
CONTACT:SEE ORDER INF ORMATION;
SOLDER:10μ" GOLD IN CONTACT AREA, MATTE TIN ON TAIL
- LOCKING CLIP:
MATTE TIN CONTACT AND TAIL

ELECTRICAL:

- CURRENT RATING:23A-58.7 PER POWER BLADE
- WITHSTANDING VOLTAGE:250V AC for 1 min
- CONTACT RESISTANCE:30mΩ MAX
- INSULATION RESISTANCE:1000MΩ MIN

ENVIRONMENTAL:

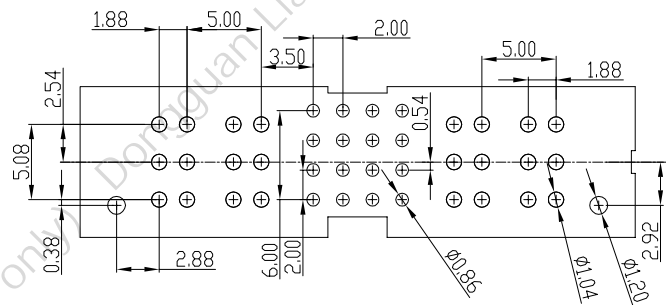
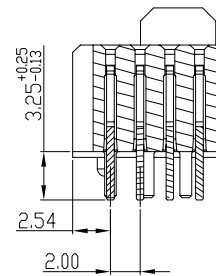
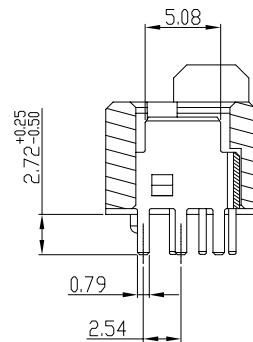
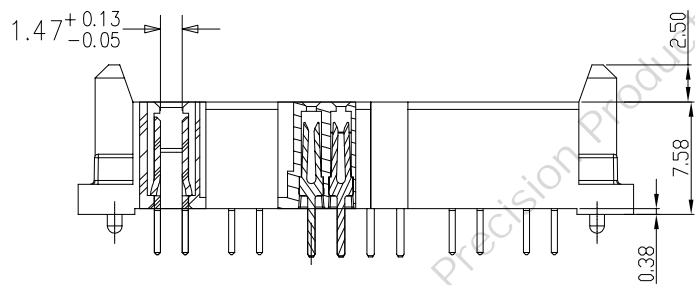
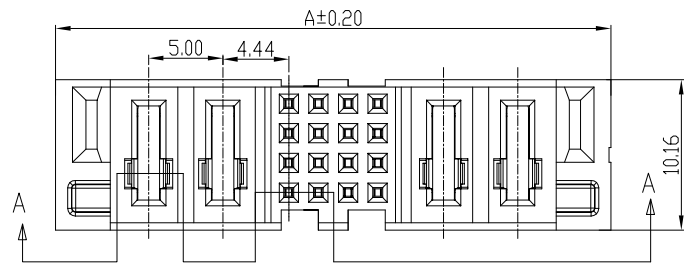
- OPERATING TEMPERATURE:-55°C TO +125°C.



A0	NEW EDITION	East_Zhou	2022.03.03
修订	修改摘要	签名	日期
SER	REVISION DESCRIPTION	SIGNATURE	DATE

一般公差	
GENERAL TOLERANCE	
XX	±0.30
XX	±0.13
XX	±0.05
ANGLES	±2°
版本 A	
(REV)	

直插大电流带信号公座LMPTC51



Recommended PC board pattern
(TOP VIEW)

NOTES:

MATERIAL:

- 1.HOUSING:THERMO-PLASTIC. UL 94V-0 NATURE
- 2.CONTACT:PHOSPHOR BRONZE
CONTACT:SEE ORDER INFORMATION;
SOLDER:10μ" GOLD IN CONTACT AREA, MATTE TIN ON TAIL
- 3.LOCKING CLIP:
MATTE TIN CONTACT AND TAIL

ELECTRICAL:

- 1.CURRENT RATING:23A-58.7 PER POWER BLADE
- 2.WITHSTANDING VOLTAGE:250V AC for 1 min
- 3.CONTACT RESISTANCE:30mΩ MAX
- 4.INSULATION RESISTANCE:1000MΩ MIN

ENVIRONMENTAL:

1. OPERATING TEMPERATURE:-55°C TO +125°C.



POWER PINS	A			
	16 SIGNAL PINS	24 SIGNAL PINS	40 SIGNAL PINS	80 SIGNAL PINS
1	27.44	31.45	39.44	59.44
2	37.44	41.45	49.44	69.44

修订 SER	修改摘要 REVISION DESCRIPTION	签名 SIGNATURE	日期 DATE

一般公差 GENERAL TOLERANCE	
.X	±0.30
.XX	±0.13
.XXX	±0.05
ANGLES	±2°

版本 A (REV)

直插大电流带信号母座LMPSC51